

Breeze Dryer Rotary Deck/Patio Plate

Important: Read These Instructions Prior to Installation and Use

Installation Instructions:

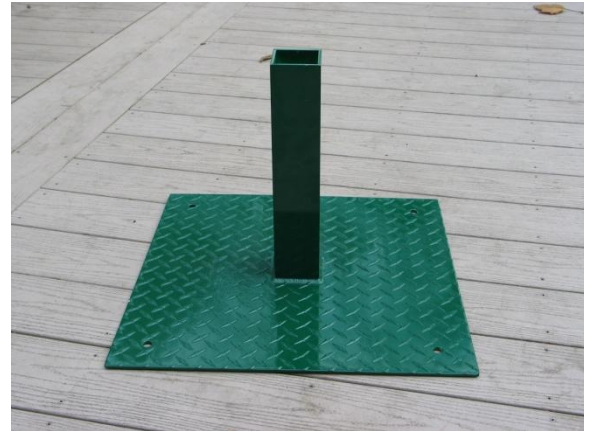
Select a suitable area for installation. Allow a minimum of 2 feet clearance around the Rotary Hoist (See Owner's Manual).

Deck Installation:

Neck Up – (this installation may require you to cut the base of your rotary clothesline to the user's height)

Drill pilot holes in the four corners of the plate. Secure the plate using four (4) - ½" fasteners and large washers. Length of fasteners will vary depending on thickness of decking.

Note- we recommend using type 304 stainless steel hardware.



Neck Down – (flush mount)

Install a ½ in. x 3 ¼" bolt, washer and nut in the neck of the plate. Cut out a 2 ¾" square in your deck. Notch the square to accommodate the bolt and nut. Invert the plate, feed the neck through the hole cut in the deck and mount the base flush with the deck. Drill the pilot holes in the four corners of the plate and secure the plate with four (4) - ½" fasteners.

Note- you may consider framing out the underside of the deck around the opening for added strength.



Patio Installation:

Pre-drill the holes on the four corners of the plate and secure with appropriate hardware including large washers. Test to make sure that the plate is well anchored.

Note - We recommend a ½" x 2" stainless steel dropin. This will give you the flexibility to remove the plate if necessary.

Carton Contents:

1 – Rotary Deck Plate (Plate dimensions - 20" x 20" x 3/16")

Made in the United States of America (USA)

Please visit your local hardware store for all of your fastener needs.